



MARINE
SABRES

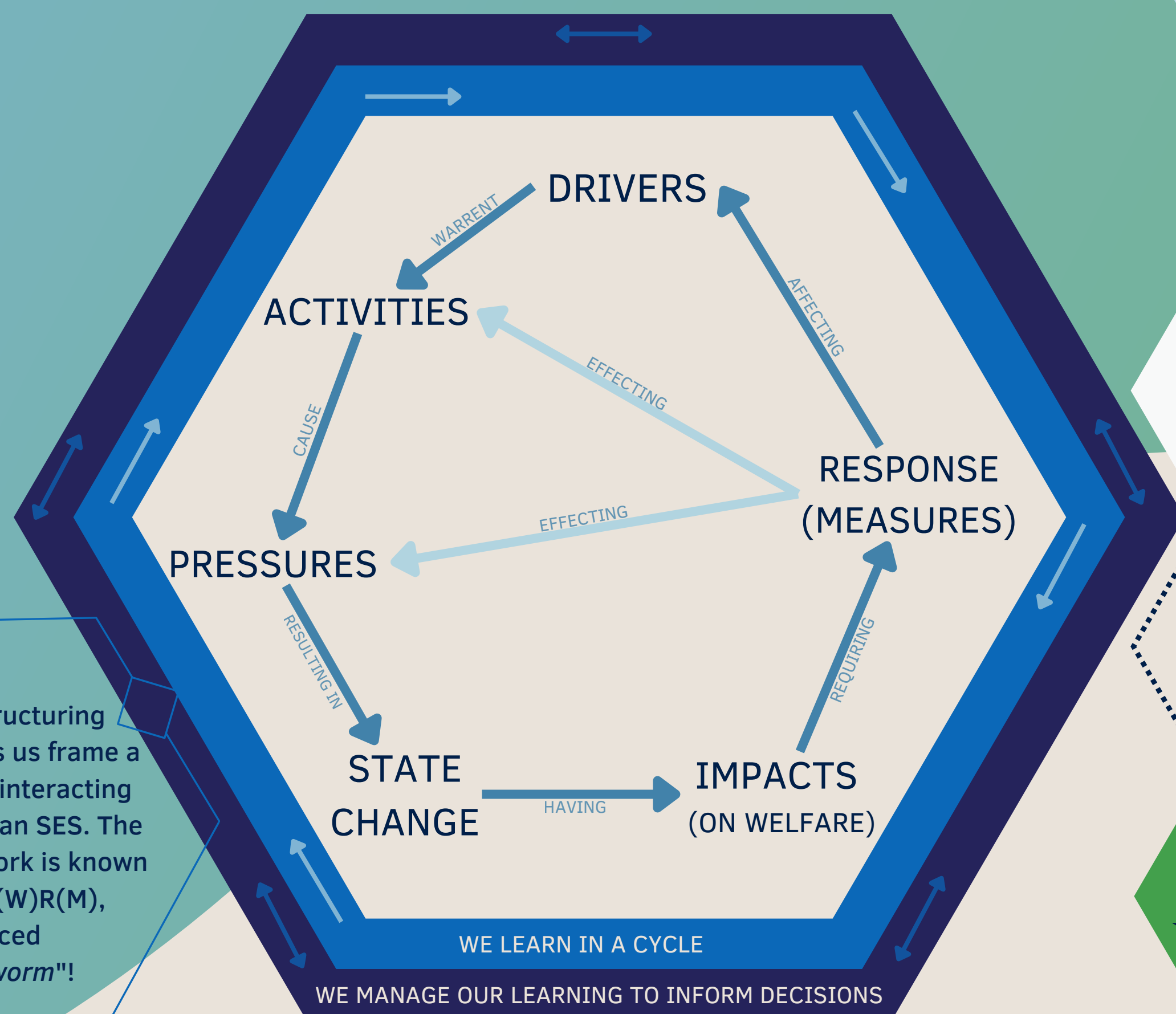
SIMPLE SES

SIMPLE SOCIAL-ECOLOGICAL SYSTEM

The marine environment is a complex system with many interacting natural and human elements which makes it challenging to manage.

The interacting elements can be regarded as a Social-Ecological System (SES) which requires adaptive management to achieve the overall aim of protecting the natural system while delivering benefits for society

The Simple SES integrates all of the natural and societal aspects and is widely applicable.



A problem structuring framework helps us frame a causal chain of interacting elements within an SES. The pictured framework is known as the DAPSI(W)R(M), pronounced "dap-see-worm"!

